

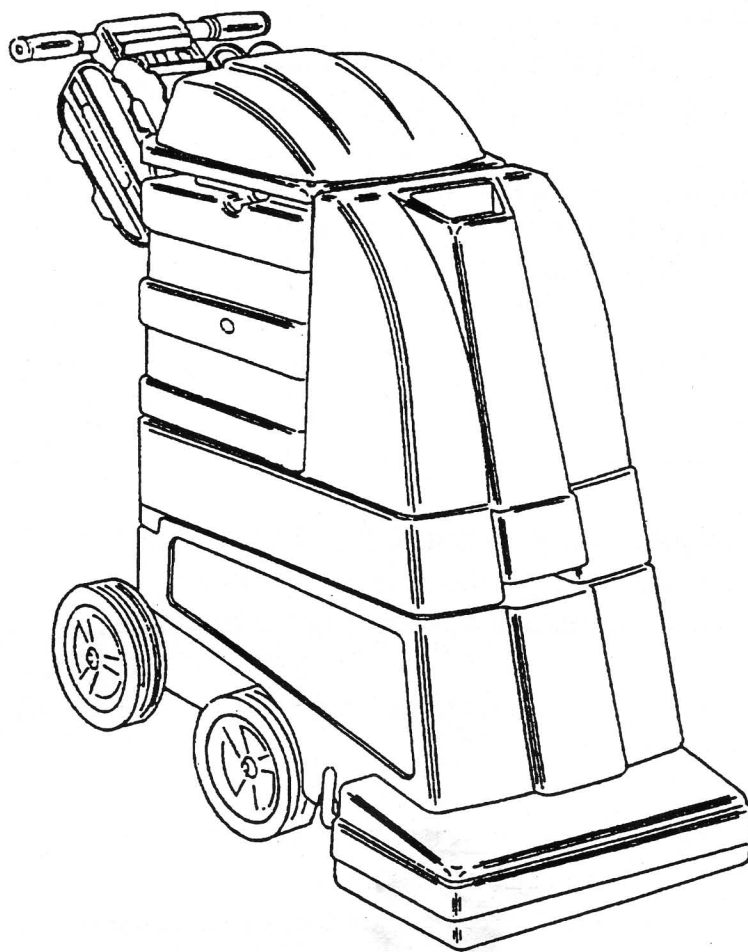
# POLARIS AND SUPERNOVA

---

# OWNER'S MANUAL

# & PARTS LIST

This equipment is intended for commercial use only.



## POLARIS 800 & 1200

## SUPERNOVA 800 & 1200



## **BEFORE OPERATING THE MACHINE**

---

Read the manual carefully and completely before attempting to operate the unit. This manual has important information for the use and safe operation of the machine. Keep this manual handy at all times. This machine will ensure years of satisfactory service if operated and maintained according to recommendations in the manual. If additional information is needed, please contact your local distributor or write to:

EDIC  
1753 Blake Avenue  
Los Angeles, California 90031-1006

All information and specifications printed in the manual and parts list are current at the time of printing; however, because of EDIC's policy of continual product improvement, we reserve the right to make changes at any time without notice.

This machine is shipped with antifreeze in the solution line system to protect the pump and valves from freezing during transport and storage. Before you use the unit, rinse the solution line system with clean water (See Preparing The Machine).

## **WARNING**

---

- The machine was designed for use on carpet, floor and upholstery extraction application as per instructions and recommendations written in this manual. Any deviation from its proper use or purpose and the consequential damage that may occur is the sole responsibility of the end user.
- Disconnect the power cord from outlet before servicing. Do not leave machine connected to an electrical outlet when unattended.
- Do not immerse or use this machine in standing water. Such use may cause electric shock.
- This equipment is not designed to handle or use combustible/volatile substance such as gasoline or kerosene, in, on, or near the machine. The use of such materials will cause an extreme hazard condition.
- When using an extension cord, use only a 3 conductor grounding cord—12 ga. wire or heavier.
- To avoid electric shock, do not expose the unit to rain—store it indoors only.
- Do not use the machine for dry vacuuming. This machine is not outfitted with a fine dust filter and it will damage the vacuum motor(s).

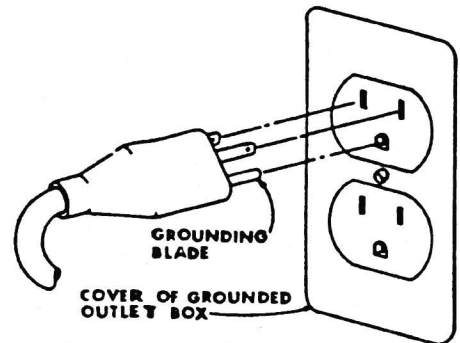
- Use defoamer at all times to prevent damage to the vacuum motor(s).
- Do not use water in excess of 140°F (62°C).
- Use only commercially available carpet cleaners and defoamer intended for use with machines of this type. Do not use dyes, bleaches, ammonia or other additives. The use of powdered cleaning solution if not diluted properly made result in damage to the pump.
- Do not expose machine to freezing temperatures.
- All repairs must be done by an authorized EDIC repair station.
- Do not use replacement parts other than those specified in the parts list.

FAILURE TO COMPLY WITH THE ABOVE WARNING INSTRUCTIONS WILL VOID THE WARRANTY.

### **GROUNDING INSTRUCTIONS**

---

The 120 V. A/C and the 220 V. A/C models have been outfitted with the appropriate grounded connectors. Make sure the machine is connected to a grounded outlet having the same configuration as the grounded plug. No adapter should be used with this machine. Any modification to the connectors will void the warranty.



### **PREPARING THE MACHINE**

---

1. Rinse then fill the recovery pails with clean hot tap water (not to exceed 140°F). When pouring water, make sure drain hose is clipped in the upright position. Pour the water into the solution tank.
2. Add recommended amount of cleaning solution to the tank, follow mixing directions on label for best results.
3. Set the recovery pails back in place. Add recommended amount of defoamer to the recovery pails. Close the lid.

### **TO CLEAN CARPET**

---

1. Connect machine to a grounded electrical outlet.
2. Turn on the VACUUM, PUMP and BRUSH switches.
3. Lift up on the handle grips to insure that the front of the machine rests on the carpet. Slowly pull the machine backwards while pressing on the carpet spray switch (below the left handle grip). Monitor the extraction process through the vacuum lid. Release the spray switch 6 inches before ending the stroke.

**NOTE:** On Supernova models the "Activate" switch operates the solution release and brush. Use the direction lever to operate the machine in the direction you wish to clean.

NOTE: If dirty solution does not appear through the vacuum lid check to be sure if:

- The vacuum lid is resting properly on the recovery pails
- The machine's nose is touching the carpet in the working mode.
- The solution tank is not empty.

4. Roll the machine forward on its four wheels for next stroke. Make overlapping passes to prevent streaking. Check solution level from time to time (see solution indicator tube on rear left corner of the back).

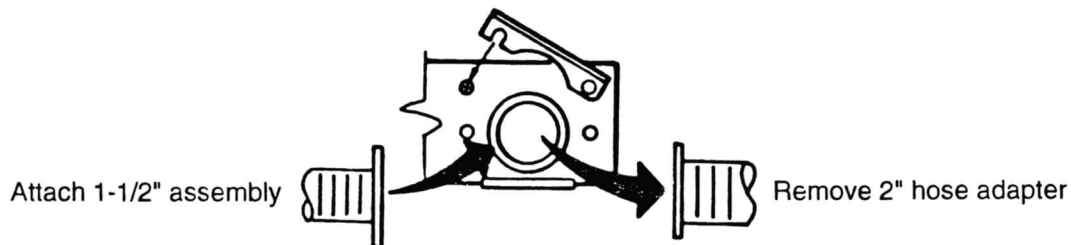
NOTE: If foam appears on vacuum lid, turn the VACUUM SWITCH OFF IMMEDIATELY. Add more defoamer to the recovery pails to dissolve foam or empty the recovery pails.

5. When the solution tank runs empty, turn off the vacuum, pump and brush switches. Empty the recovery pail and rinse thoroughly. Then repeat steps on PREPARING THE MACHINE.

### **TO ATTACH ACCESSORY HOSE**

---

1. Remove 2" hose adapter connection from machine.
2. Attach 1 1/2" assembly with adapter plate to vacuum lid inlet.
3. Pull back female quick disconnect sleeve on the machine and insert male plug on the solution hose.



### **TO EMPTY THE SOLUTION TANK**

---

1. Unhook the drain nozzle (located on the side of the machine from the drain clips), placing the end of the hose into the recovery pails.

### **AFTER EACH USE**

---

- Empty and thoroughly rinse the recovery pails.
- Coil power cord onto the cord wrap.
- Remove dirt and lint build-up inside vacuum lid filter screen.
- Clean solution line filter.
- Wash the vacuum lid with a soap solution and sponge to prevent dirt from accumulating on the surface. (To avoid scratching use soft cloth only).
- Lean the machine back on its 4 wheels during storage or when it's not in use to prevent brush distortion.)

## **MAINTENANCE**

---

The upright extractor is engineered for minimum maintenance. But it does require some care to keep it in optimum working condition. Careful attention to these maintenance instructions will give you maximum operating performance and life expectancy of the machine.

- Solution line, fittings and accessory tools. —Flush the machine and accessories at least once a month with solution of 1 part water to 3 parts white vinegar to neutralize the alkaline residue left by the cleaning solution.
- Filter Solution screen. —Unscrew bowl and rinse screen in running tap water. If screen is clogged up with soap, soak in vinegar solution and brush clean.
- Vacuum lid screens. —Always keep the screen clean in order to maintain maximum suction and airflow performance from the vacuum motor. The screens also prevent lint from accumulating in the vacuum motor fan chamber thus increasing the productive life of the motor. Do not operate the unit without the screen installed! If the screen gets lost or damaged, replace it immediately.
- Quick disconnect coupler. —Spray with lubricant (WD-40) or equivalent to prevent coupler from sticking.

## **TROUBLESHOOTING** Polaris and Supernova Models

---

*For additional Supernova troubleshooting see page 7 thru 12*

### **ELECTRICAL SYSTEM**

PROBLEM	POSSIBLE CAUSE
No electrical power.	<ol style="list-style-type: none"><li>1. Defective power cord.</li><li>2. House or building circuit breaker trips.</li></ol>
Switch is turned on. Power is intermittent to motor.	<ol style="list-style-type: none"><li>1. Faulty electrical cable.</li><li>2. Defective Switches.</li><li>3. Loose terminal or discolored terminal connections.</li></ol>

### **VACUUM SYSTEM**

PROBLEM	POSSIBLE CAUSE
No Vacuum	<ol style="list-style-type: none"><li>1. Vacuum lid is not resting on recovery pail.</li><li>2. Loose vacuum hose, vacuum connection.</li></ol>
Low Vacuum	<ol style="list-style-type: none"><li>1. Accumulated dirt on lid screen.</li><li>2. Worn out vacuum lid gasket.</li><li>3. Lint &amp; dirt build-up on suction head. (brush chamber).</li><li>4. Defective vacuum hose.</li><li>5. Loose connection in the vacuum motor.</li></ol>

## SOLUTION SYSTEM

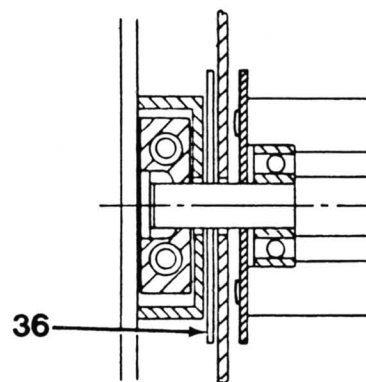
PROBLEM	POSSIBLE CAUSE
Pump motor on, no spray thru carpet spray tips or accessory tool	<ol style="list-style-type: none"> <li>1. Clogged spray tips.</li> <li>2. Clogged solution intake filter screen.</li> <li>3. Clogged solenoid valve or open solenoid coil.</li> <li>4. If carpet spray works normally, plugged up female quick disconnect coupler.</li> <li>5. Punctured pump diaphragm.</li> <li>6. Defective pump check valve.</li> <li>7. Crack in pump housing.</li> <li>8. Debris in check valve.</li> </ol>
Uneven or weak spray from tips.	<ol style="list-style-type: none"> <li>1. Clogged or dirty spray tips.</li> <li>2. Accumulated dirt on solution intake filter screen.</li> <li>3. Accumulation of debris inside pump and plumbing.</li> <li>4. Worn pump bearing (excessive noise).</li> <li>5. Punctured pump diaphragm.</li> <li>6. Defective rectified</li> </ol>
Carpet spray is turned off solution still drips from spray tips.	<ol style="list-style-type: none"> <li>1. Debris caught in between the 3 solenoid valve parts and the plunger.</li> </ol>
Vacuum motor working pump motor fails to turn on.	<ol style="list-style-type: none"> <li>1. Loose "Molex" plug connector. Loose wiring connection.</li> <li>2. Defective pressure switch in pump motor (100 psi model).</li> <li>3. Defective pump motor or rectifier.</li> </ol>

## ROTARY BRUSH SYSTEM

PROBLEM	POSSIBLE CAUSE
Motor runs, brush won't spin.	<ol style="list-style-type: none"> <li>1. Loose pulley tension.</li> <li>2. String caught between walls.</li> </ol>
Brush motor fails to turn on after circuit breaker has been reset.	<ol style="list-style-type: none"> <li>1. Defective bridge rectifier.</li> <li>2. Defective motor.</li> </ol>
Floating brush won't move up and down.	<ol style="list-style-type: none"> <li>1. Debris caught inside the slide block guide.</li> </ol>

## **BRUSH DRIVE BELT SERVICE AND/OR REPLACEMENT (refer to parts diagram).**

1. Remove 2 1/4-20 hex screws attaching lower frame to upper frame.
2. On Models 800 & 1200, remove (4) #8-32 screws on the sides of the brush chamber cover
3. Remove (2) spring cover plate assemblies and carefully remove springs from the slide blocks.
4. Loosen (2) 1/4-20 hex screws that hold brush motor bracket in place. Push bracket toward the front of the machine to loosen belt.
5. Remove right Open-End and left Pulley-End cover plates.
6. Slide brush assembly and slide blocks out from their guides. Replace worn and defective belt.
7. Reinstall above components. Clean accumulated lint or debris inside the slide block guides and check for wear on the teflon surfaces. Replace if necessary. The slide block washer (item #36) must be installed between the slide block guide and inside the divider wall. Adjust belt tension by moving motor bracket toward the rear. Apply minimum belt tension when the hex bolts are tightened to allow for a smooth vertical brush movement. A belt too loose will cause the belt to skip when brush is applied on the carpet. A belt too tight won't allow for up and down movement.



## **REPLACEMENT OF BRUSH ASSEMBLY AND/OR BEARINGS**

1. Repeat steps 1 thru 4.
2. Remove slide blocks from the ends of the brush shaft.
3. Remove (4) screws from string guard. Tap the shaft toward the right open end to remove the bearing.
4. Remove (4) screws from slinger and pull off brush core. Scrape off old sealant build up on the slinger and string guard. It is advisable to replace the two bearings every time the brush is replaced.
5. Reinstall the above componente. CAUTION! Install shorter step on the shaft ends toward the left pulley side. Apply silicon sealant such as GE Silicon auto seal onto the ends of the brush core before reassembling the slinger and string guard.

# SUPERNOVA 800 & I200

## TROUBLE SHOOTING

### **VACUUM VALVE**

PROBLEM	POSSIBLE CAUSE	SOLUTION
Vacuum Valve, item (8) has an air flow leak.	1. Vacuum valve, item (8) out of adjustment causing vacuum valve seal, item (15), to be incorrectly positioned.  2. Damaged or worn vacuum valve seal, item (15).  3. Broken vacuum valve pull cable, item (23).  4. Loose or broken vacuum valve pull springs, item (25).  5. Damaged vacuum valve guide face gasket, item (15).  6. Damaged vacuum valve pressure balls, item (12), or vacuum valve pressure ball springs, item (13).	Readjust. See Vacuum valve pull cable adjustment procedure.  Replace.  Replace.  Reconnect or, if broken, replace.  Replace.  Replace.
Vacuum valve, item (8) not functioning.	1. Vacuum valve springs, item (25), not connected or broken.  2. Broken pull cable, item (23).	Reconnect, or, if broken, replace.  Replace.

### **PULL CABLE MECHANISM**

PROBLEM	POSSIBLE CAUSE	SOLUTION
Direction control lever arm, item (20), does not lock in the up position.	1. One or both shaft collar set screws, item (22) are loose.  2. Too much clearance between pull cable cam, item (18), and stop bracket, item (16).  3. Damaged plunger, item (19).	Retighten set screws, item (22).  Add spacer(s), item (17), as required to bring cam, item (18) flush with stop bracket, item (28)  Replace.
Pull cable, item (23), jumps out of pull cable cam, item (18), in down position.	1. Loose or broken vacuum valve springs, item (25).  2. Vacuum valve, item (8), is too low when in up position.	Reconnect or, if broken, replace.  Readjust. See vacuum valve pull cable adjustment procedure.

# SUPERNOVA 800 & I200

## TROUBLE SHOOTING

### BRUSH MOTOR REVERSE

PROBLEM	POSSIBLE CAUSE	SOLUTION
Brush Motor fails to reverse when direction control lever arm, item (20), is in the up (backward) position.	<ol style="list-style-type: none"><li>1. Vacuum valve, item (8) does not reach its normal up position.</li><li>2. Defective reverse switch, item (11).</li><li>3. Loose switch connector, item (26).</li></ol>	<p>Adjust the pull cable jacket, item (1), and switches, item (11), as shown in the adjustment instruction section.</p> <p>Replace.</p> <p>Check color coding before connecting terminals. Reconnect terminals to obtain proper connection. Replace wire assembly if necessary.</p>
Brush Motor fails to reverse when direction control lever arm, item (20), in the down (forward) position.	<ol style="list-style-type: none"><li>1. Vacuum valve, item (8) does not reach its normal down position.</li><li>2. Defective reverse switch, item (11).</li><li>3. Loose switch connector, item (26).</li></ol>	<p>Adjust the pull cable jacket, item (1), and switches, item (11), as shown in the adjustment instruction section. Remove any dirt or foreign objects from between the vacuum valve, item (16), in down position, and the bumper, item (29). Replace vacuum valve springs, item (25), if broken or stretched.</p> <p>Replace.</p> <p>Check color coding before connecting terminals. Reconnect terminals to obtain proper connection. Replace wire assembly if necessary.</p>

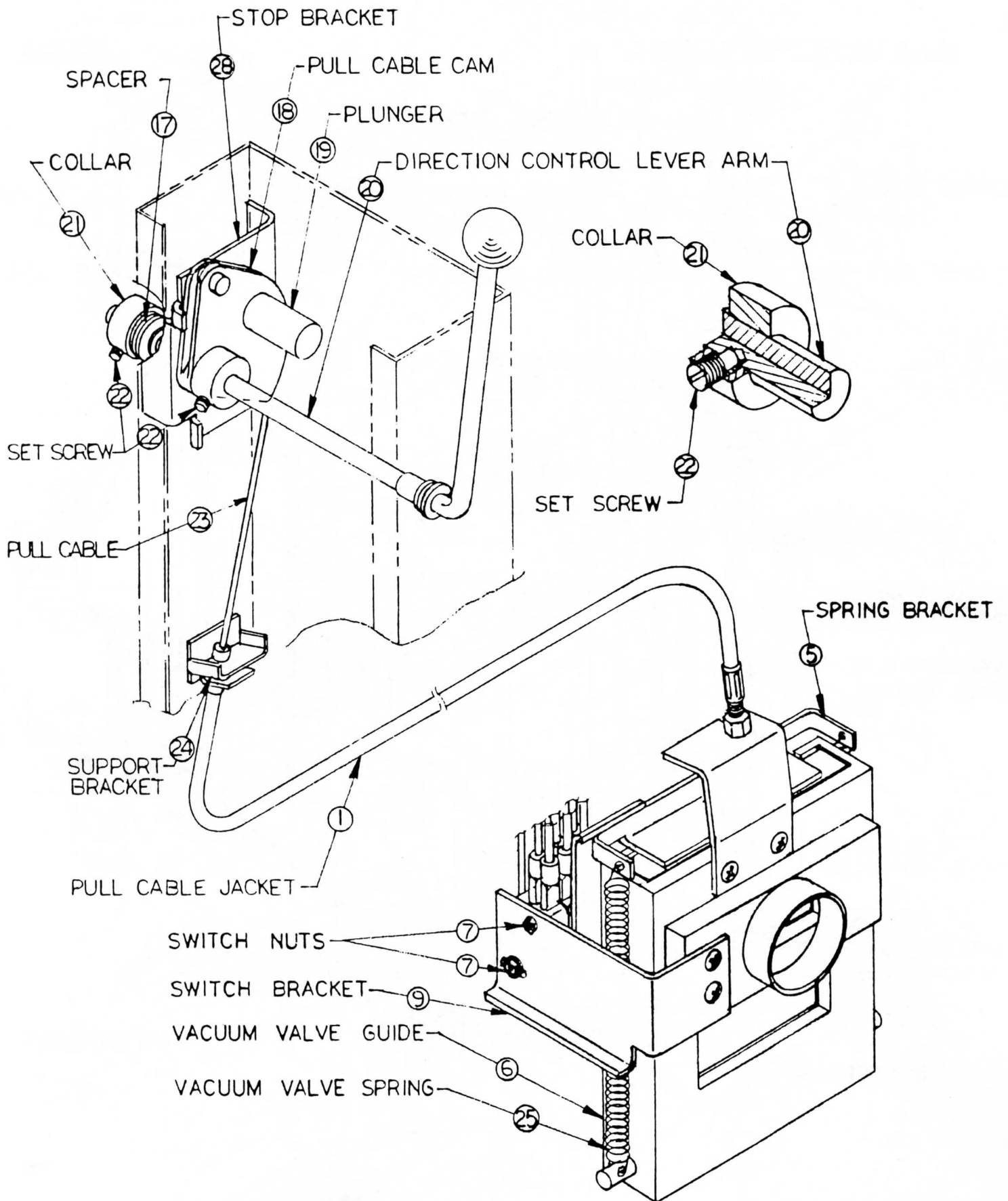
**SUPERNOVA 800 & 1200**  
**VACUUM VALVE AND BRUSH MOTOR REVERSE SWITCH**  
**ADJUSTMENT PROCEDURES**

**VACUUM VALVE PULL CABLE ADJUSTMENT** \_\_\_\_\_

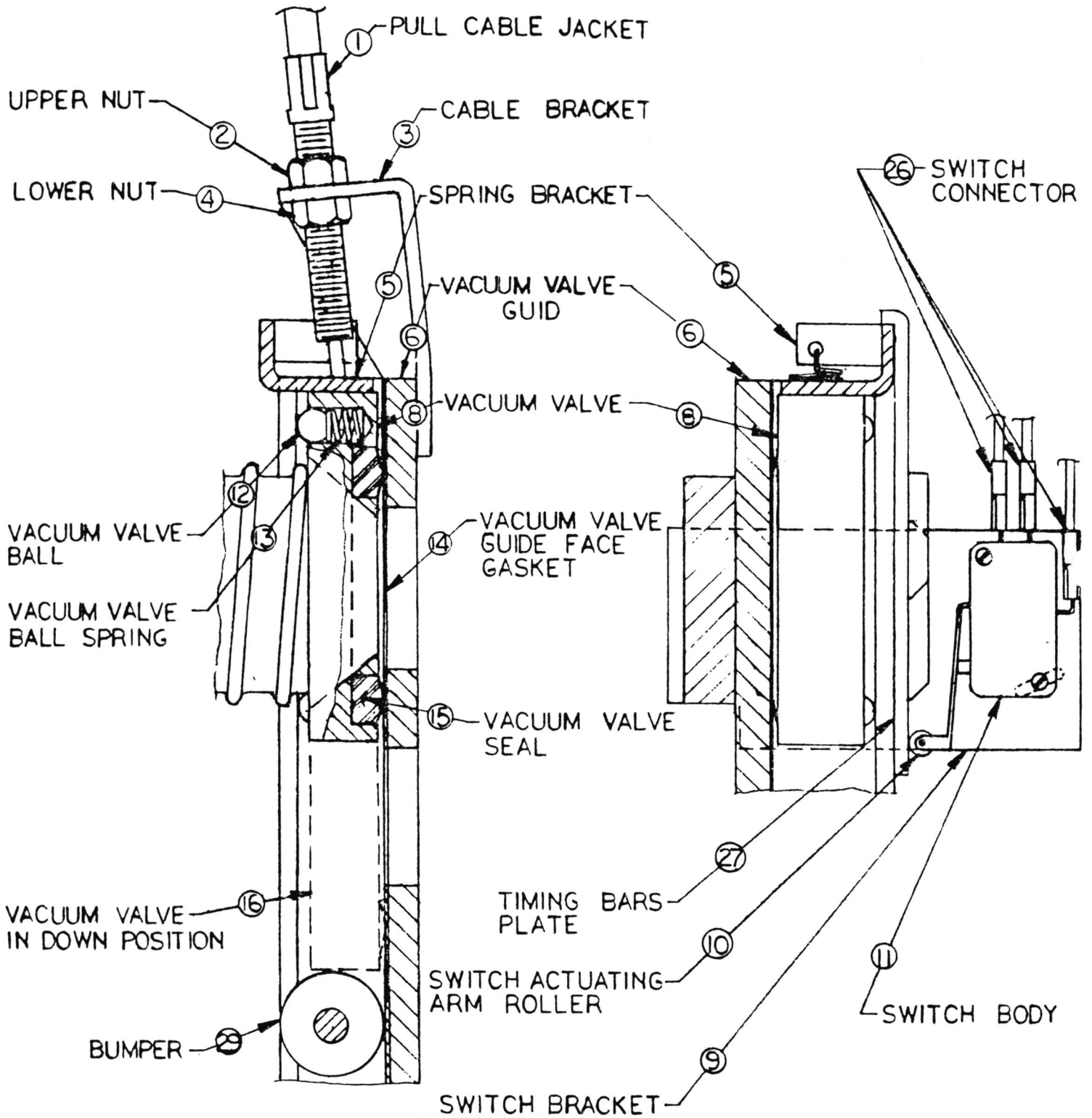
1. Drain the solution tank, and remove the recovery pails from the machine.
2. Make sure the power cord is unplugged from the power receptacle.
3. Shift the direction control lever arm to the up (backward) position.
4. Open the machine's motor housing by actuating the latch handle lever and lifting the motor housing from the front.
5. To MOVE THE VACUUM VALVE, item (8), UP:
  - Step 1. Loosen the lower pull cable jacket nut, item (4).
  - Step 2. Tighten upper pull cable jacket nut, Item (2), until the desired position is reached. [In its normal position, the upper edge of the spring bracket, item (5), is flush with the upper edge of the vacuum valve guide, item (6).]
  - Step 3. Retighten lower cable jacket nut, item (4).
6. To MOVE THE VACUUM VALVE, item (8), DOWN:
  - Step 1. Loosen the upper cable jacket nut, item (2), until the vacuum valve, item (8), reaches the desired position.
  - Step 2. Tighten the lower cable jacket nut, item (4).

**BRUSH MOTOR REVERSING SWITCHES ADJUSTMENT** \_\_\_\_\_

1. Drain the solution tank, and remove the recovery pail from the machine.
2. Make sure the power cord is unplugged from the power receptacle.
3. Shift the direction control lever arm to the up (backward) position.
4. Adjust the pull cable, if required, to insure that the vacuum valve is in the correct position. (See vacuum valve pull cable adjustment procedure.)
5. **Make the adjustment:**
  - Step 1. Slightly loosen the two switch nuts, item (7), located on the switch bracket, item (9).
  - Step 2. Rotate the three switches by pushing their bodies, item (11), toward the timing bar plate, item (27), until the switch actuating arm rollers, item (10), touch the timing bar plate, Item (27).
  - Step 3. While holding the switches, item (11), in position, retighten the two switch nuts, item (7).



ADJUSTMENT INSTRUCTIONS



# **PARTS LIST**

**POLARIS 800 & 1200  
SUPERNOVA 800 & 1200**

# PARTS LIST

POLARIS 800 & 1200  
SUPERNOVA 800 & 1200

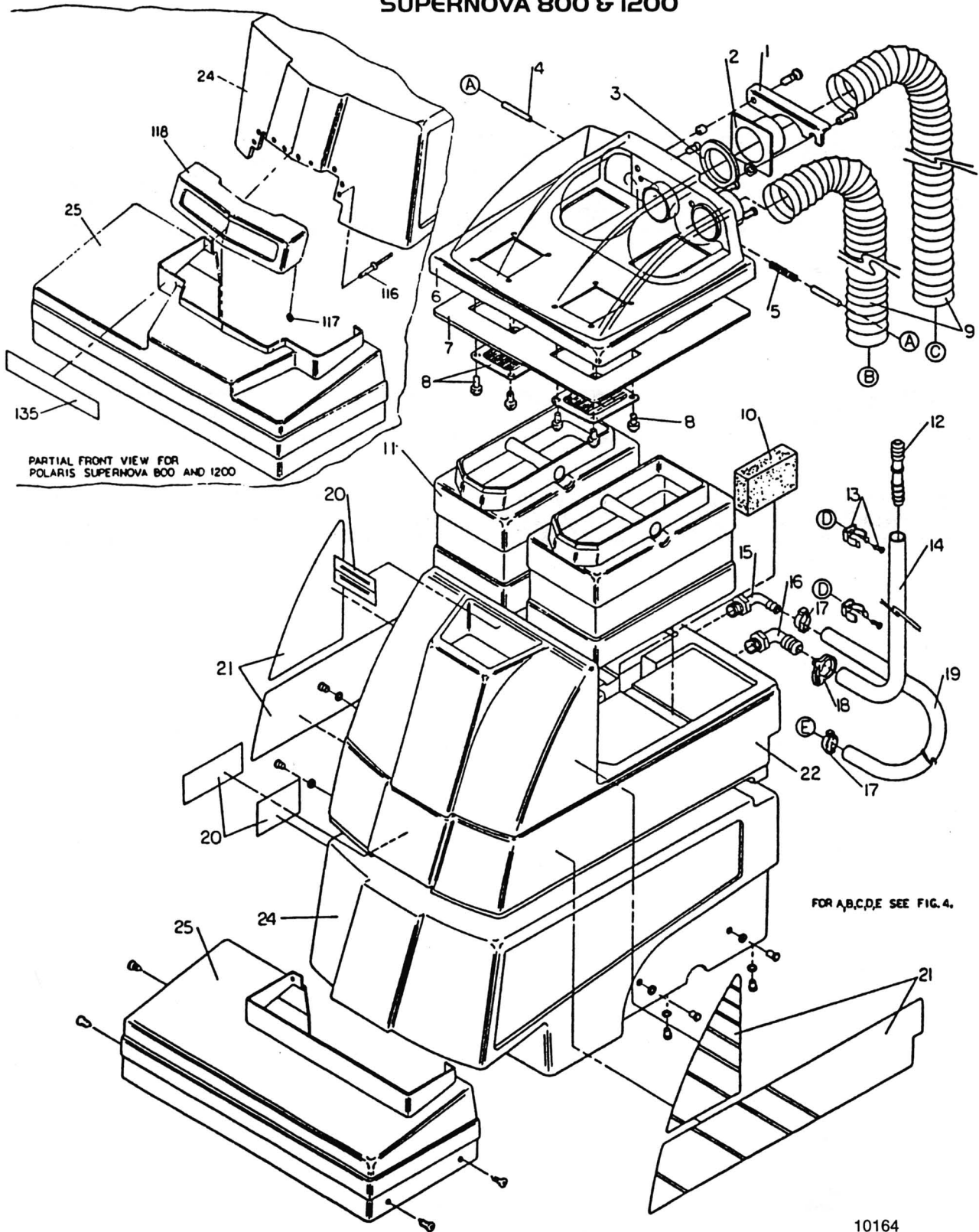
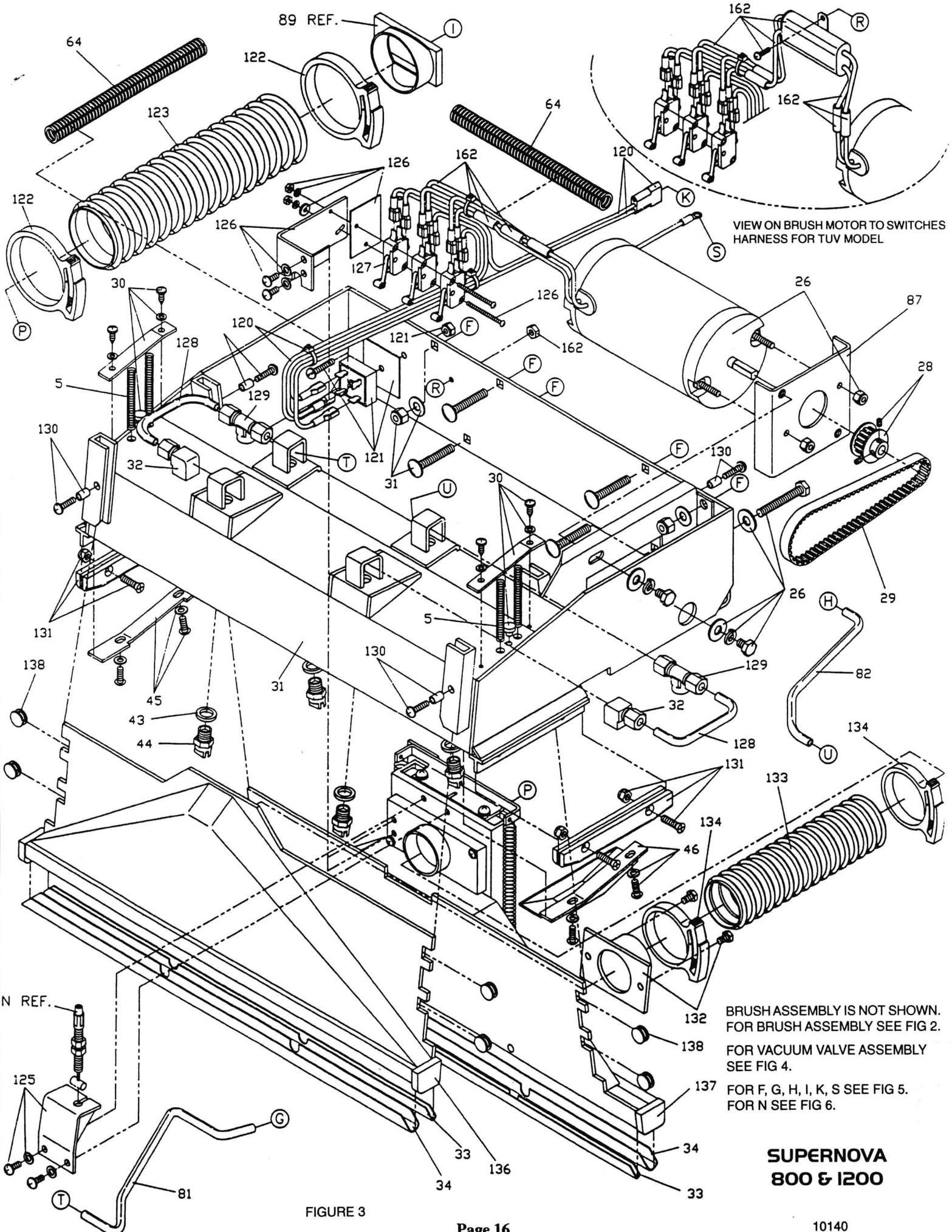


FIGURE 1





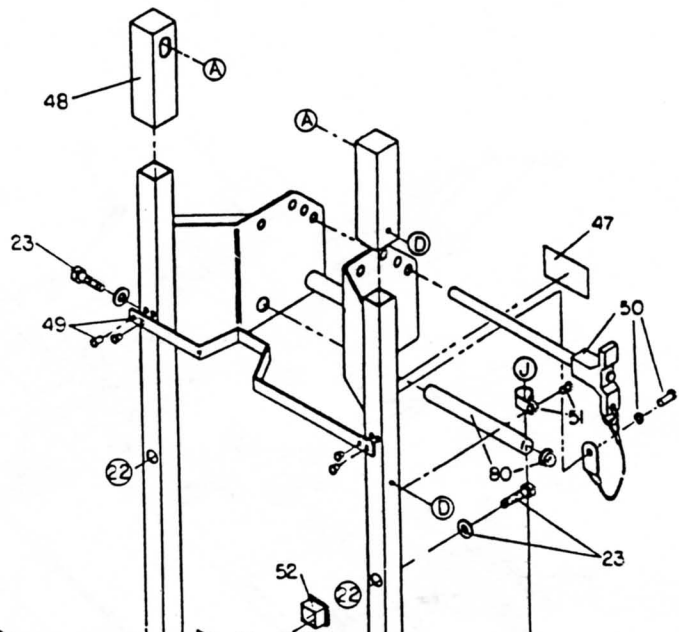
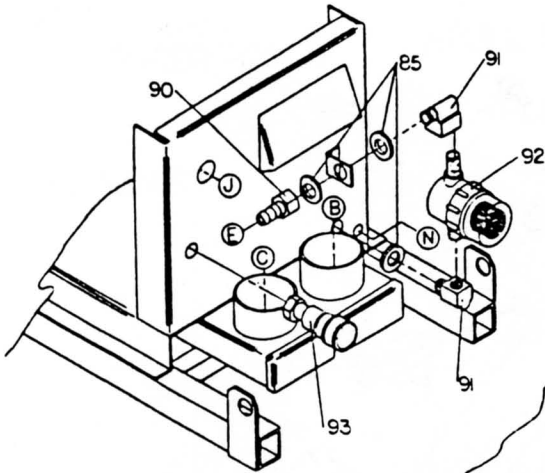
VIEW ON BRUSH MOTOR TO SWITCHES HARNESS FOR TUV MODEL

BRUSH ASSEMBLY IS NOT SHOWN.  
 FOR BRUSH ASSEMBLY SEE FIG 2.  
 FOR VACUUM VALVE ASSEMBLY  
 SEE FIG 4.  
 FOR F, G, H, I, K, S SEE FIG 5.  
 FOR N SEE FIG 6.

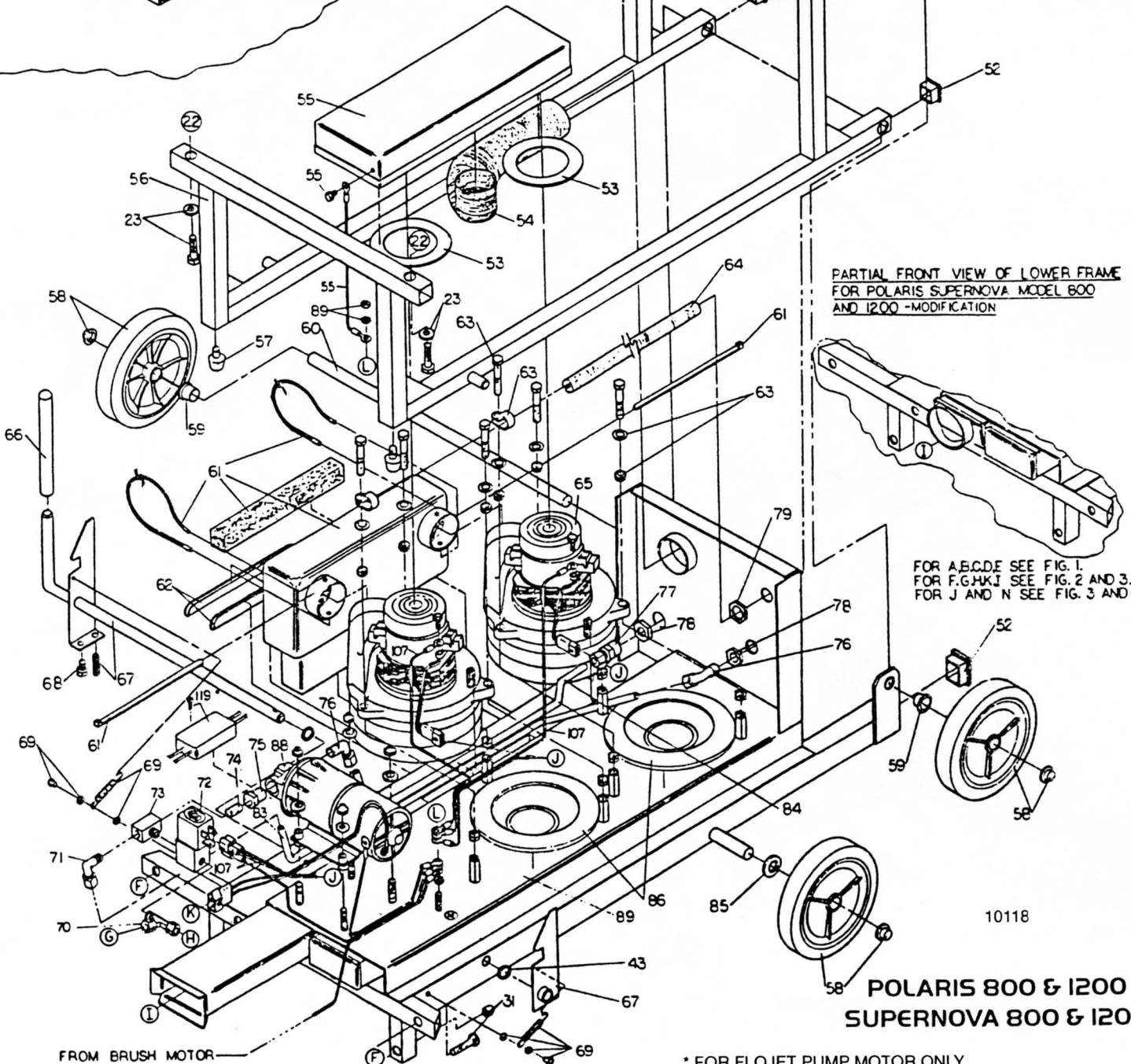
**SUPERNOVA  
 800 & 1200**

FIGURE 3

**BACK VIEW OF MACHINE**



**PARTIAL FRONT VIEW OF LOWER FRAME FOR POLARIS SUPERNOVA MODEL 800 AND 1200 -MODIFICATION**

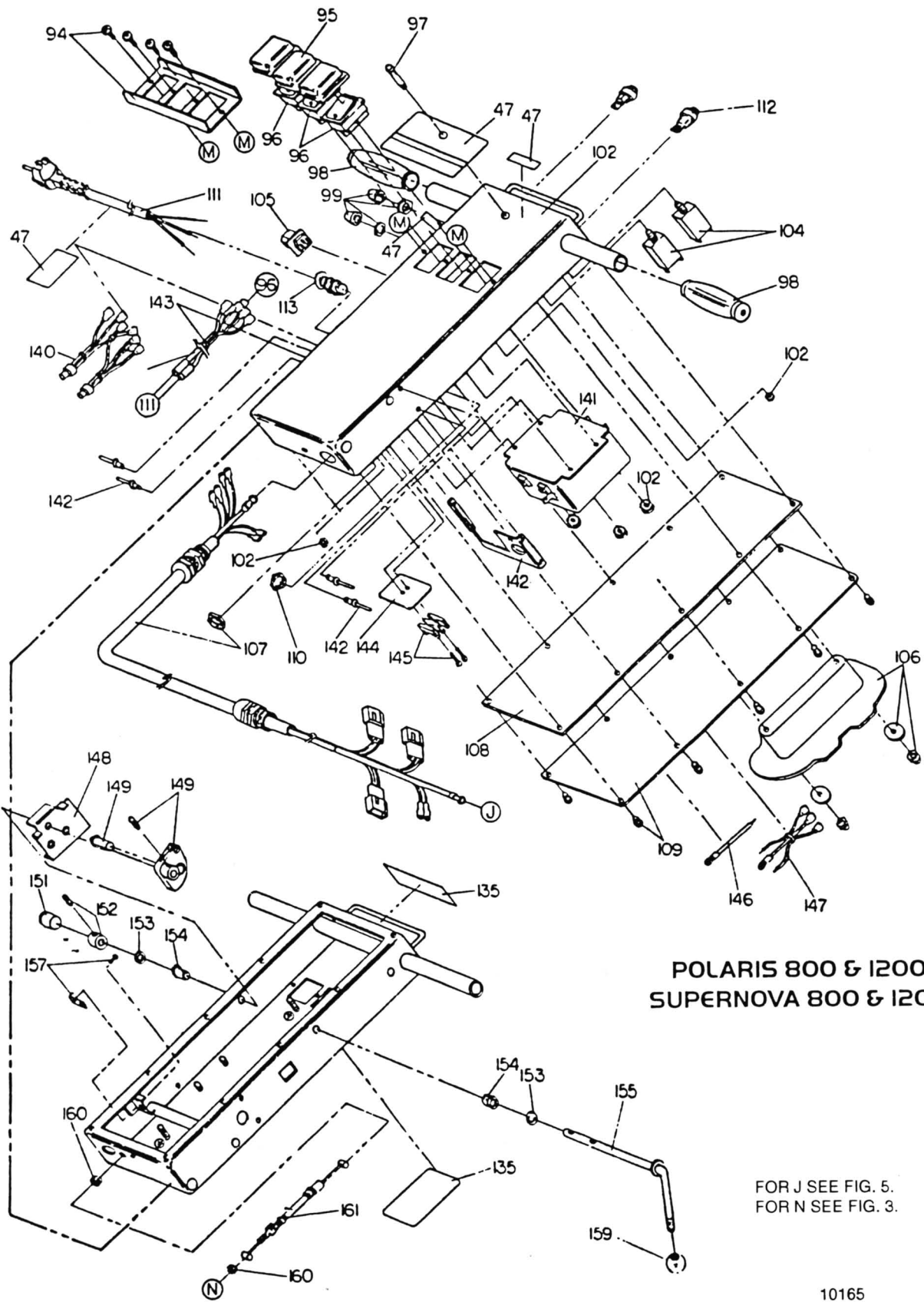


FOR A,B,C,D,E SEE FIG. 1.  
FOR F,G,H,K,J SEE FIG. 2 AND 3.  
FOR J AND N SEE FIG. 3 AND E.

10118

**POLARIS 800 & 1200  
SUPERNOVA 800 & 1200**

\* FOR FLOJET PUMP MOTOR ONLY  
FIGURE 5



**POLARIS 800 & 1200  
SUPERNOVA 800 & 1200**

FOR J SEE FIG. 5.  
FOR N SEE FIG. 3.

FIGURE 6

10165

ADDITIONAL PARTS FOR SUPERNOVA

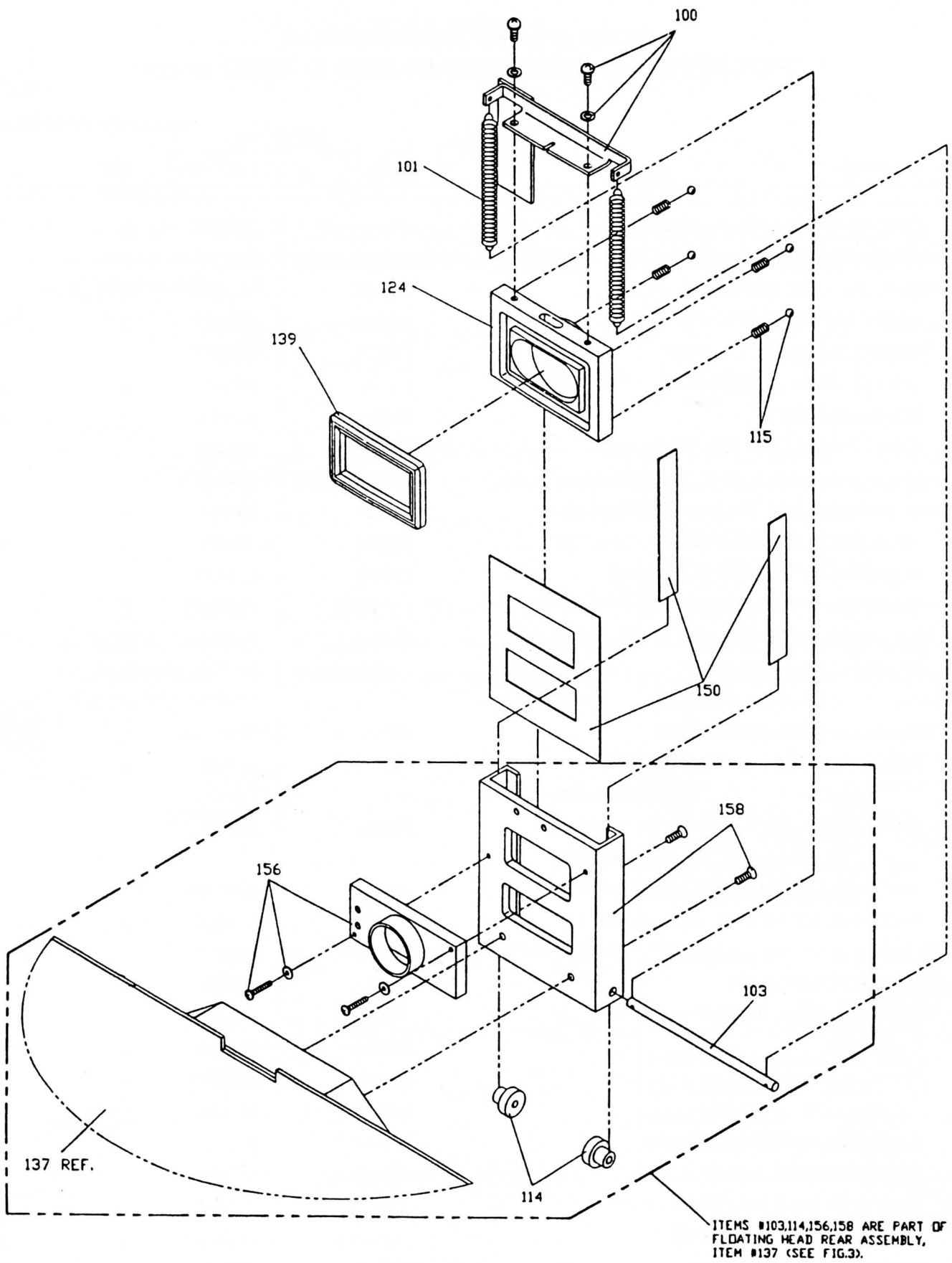


FIGURE 4

**SUPERNOVA  
800 & 1200**

10139

# PARTS LIST

## POLARIS AND SUPERNOVA 800 & 1200 MODELS

Item	Description	Part No.		qty	fig
		Polaris	Supernova		
1	CLIP, ADAPTER RETAINER STEEL	D02391	D02391	1	1
2	HOSE, ADAPTOR ALUMINUM	D02359	D02359	1	1
3	SEAL, VACUUM INTAKE NEOPRENE	E02431	E02431	1	1
4	SHAFT, LID PIVOT	D02373	D02373	2	1
5	SPRING, STEEL, DOME PIVOT	D02372	D02372	1	1
	SPRING, STEEL, SLIDE BLOCK	D02372	D03375	4	2 & 3
6	DOME ASSEMBLY	80491A	80491A	1	1
7	GASKET, DOME 1/2" THK NEOPRENE	E02428	E02428	1	1
8	SCREEN VACUUM INTERNAL PORT ASSY, DOME	82474A	82474A	2	1
9	HOSE, VACUUM 2" ID (POLARIS 800) 6 FT	J00618	J00618	1	1
	HOSE, VACUUM 2" ID (POLARIS 1200) 7 FT	J00618	J00618	1	1
10	PLUG, SOLUTION TANK NEOPRENE	L00795	L00795	1	1
11	RECOVERY PAILS (POLARIS 800)	F02465-2	F02465-2	2	1
	RECOVERY PAILS (POLARIS 1200)	F02465-3	F02465-3	3	1
12	DRAIN NOZZLE, COUPLING PLASTIC 1/2" BARB x 1/2" BARB	A00165	A00165	1	1
13	CLIP ASSEMBLY, DRAIN HOSE	80263-3A	80263-3A	1	1
14	HOSE, DRAIN, CLEAR VINYL 5/8" OD 1/8" WALL x 13" LG (POLARIS 800)	J00598	J00598	1	1
	HOSE, DRAIN, CLEAR VINYL 5/8" OD x 1/8" WALL x 24" LG (POLARIS 1200)	J00598	J00598	1	1
15	90 ELBOW, 1/2" MP x 3/8" BARB NYLON	A00138	A00138	1	1
16	90 ELBOW, 1/2" MP x 5/8" BARB NYLON	A00099	A00099	2	1
17	CLAMP, HOSE, 5/8" OETIKER	J00637	J00637	1	1
18	CLAMP, HOSE NYLON	J00652	J00652	1	1
19	HOSE, BRAIDED, PLASTIC 3/8" ID x 15" LG	J00595	J00595	1	1
20	LABEL KIT	82570A	82570A	1	1
21	DECAL KIT POLARIS 800	H00575	H00575	1	1
	DECAL KIT POLARIS 1200	H00576	H--576	1	1
22	SOLUTION TANK (POLARIS 800)	F02463-7	F02463-7	1	1
	SOLUTION TANK (POLARIS 1200)	F02463-3	F02463-3	1	1
23	SOLUTION TANK MOUNTING KIT	82310A	82310A	1	5
24	HOUSING, MOTOR, PLASTIC	F02470-1	F02470-5	1	1
25	COVER, BRUSH CHAMBER	F02488	F02488-1	1	1
26	BRUSH DRIVE MOTOR ASSEMBLY (115VAC)	82538A	82524A	1	2 & 3
	BRUSH DRIVE MOTOR ASSEMBLY (220VAC)	82538-1A	82523A	1	2 & 3
27	WIRE ASSEMBLY, GROUND	00185-6A	00185-6A	1	2 & 3

# PARTS LIST

## POLARIS AND SUPERNOVA 800 & 1200 MODELS

Item	Description	Part No.		qty	fig
		Polaris	Supernova		
28	PULLEY, BRUSH DRIVE MOTOR	D00398-1	D00398-6	1	2 & 3
29	BELT, TIMING	L00779-1	L00779	1	2 & 3
30	COVER PLATE ASSEMBLY, SPRING	82378A	83355A	1	2 & 3
31	BRUSH CHAMBER ASSEMBLY	82362A	83368A	1	2 & 3
32	90 ELBOW, BRASS 1/8" FP x 1/4" C TUBE FITTING	A00144	A00144	2	2 & 3
33	GLIDE, BACK END, SS	D02366	D03360	1 (2)	2 & 3
34	GLIDE, FRONT END, SS	D02365	D03358	1 (2)	2 & 3
35	SLIDE BLOCK ASSEMBLY	80500A	80500A	2	2
36	WASHER, SLIDE BLOCK NYLON 1/16" THK x 24/64" ID x 2" OD	F00504	F00504	1	2
37	STRING GUARD ASSEMBLY	82235A	82235A	1	2
38	BEARING, BRUSH	G00536	G00536	2	2
39	BRUSH	F00505	F02477	1	2
40	SHAFT, BRUSH STEEL, 1/2" OD x 18" LG	D02371	D02371	1	2
41	SLINGER ASSEMBLY, ROTARY BRUSH	82376A	82376A	1	2
42	PULLEY, ROTARY BRUSH ALUMINUM	D00398-2	D00398-2	1	2
43	WASHER, NYLON 3/32" THK x 7/16" ID x 5/8" OD	C02298	C02298	4	2 & 3
44	SPRAY TIP, BRASS 1/8" NPT	A00091-2	A00089	2 (4)	2 & 3
45	COVER PLATE ASSEMBLY, OPEN-END	82368A	83352A	1	2 & 3
46	COVER PLATE ASSEMBLY, PULLEY END	82367A	83353A	1	2 & 3
47	LABEL KIT, ENGLISH		83548A	1	1,5 & 6
	LABEL KIT, GERMAN		83550A	1	1,5 & 6
48	PIVOT, LID FRAME EXTENSION, STEEL 1" SQUARE TUBE (POLARIS 800)	D02344-1	D02344-1	2	5
	PIVOT, LID FRAME EXTENSION, STEEL 1" SQUARE TUBE (POLARIS 1200)	D02344	002344	2	5
49	BRACKET ASSEMBLY, HOSE GUIDE	82361A	82361A	1	5
50	PIN ASSEMBLY, RETAINING	82383A	82383A	1	5
51	CLAMP ASSEMBLY, CORD	80187A	80187A	1	5
52	CAP, END, 7/8" SQUARE BLK	K00712-4	K00712-4	4	5
53	GASKET, COOLING AIR DUCT	E02450	E02450	2	5
54	HOSE, EXHAUST, 1" ID x 7" LG	J00654	J00654	1	5
55	DUCT, COOLING AIR, STEEL (250 VAC)	D02343	D02343	1	5
56	FRAME UPPER, STEEL	D02342-1	D02342-1	1	5
57	FOOT, RUBBER	K00705	K00705	2	5
58	WHEEL ASSEMBLY	82514A	82514A	1	5
59	BUSHING, NYLINER, 1/2" ID	K00674	K00674	2	5

# PARTS LIST

## POLARIS AND SUPERNOVA 800 & 1200 MODELS

Item	Description	Part No.		qty	fig
		Polaris	Supernova		
60	AXLE, WHEEL, STEEL, 1/2" OD	D00418-14	D00418-14	1	5
61	MUFFLER ASSEMBLY	80790A	80790A	1	5
62	CLIPS, MUFFLER, STEEL	D02380	D02380	2	5
63	VACUUM MOTOR MOUNTING KIT ASSEMBLY	82291A	82291A	1	5
64	LOOM, CORRUGATED, 26" LG	F00463	F00463	1	5
65	VACUUM MOTOR, 2 STAGE, 5.7" DIA, 115 VAC W/ MOLEX CONNECTOR	00537A	00537A	2	4
	VACUUM MOTOR, 2 STAGE, 5.7" DIA, 240 VAC W/ MOLEX CONNECTOR	02521A	02521A	2	5
66	CAP, LATCH HANDLE	K00725	K00725	1	5
67	LATCH HANDLE ASSEMBLY	82355A	82355A	1	5
68	CAPSCREW, MACHINE STEEL HEX HEAD, 1/4-20 x 1-1/4" LG	C02310	C02310	1	5
69	LATCH HANDLE SPRING ASSEMBLY	82357A	82357A	1	5
70	TEE, MALE BRANCH, BRASS 1/8" MP x 1/4" C TUBE FITTING	A00143	A00153	1	5
71	90 ELBOW, BRASS 1/8" MP x 1/4" C TUBE FITTING	A00132	A00132	1	5
72	SOLENOID, 1/8" NPT (115 VAC)	G02536	G02536	1	5
	SOLENOID, 1/8" NPT (250 VAC)	G02537	G02537	1	5
73	TEE, STREET, BRASS, 1/8" NPT	A00135	A00152	1	5
74	NIPPLE, SHORT BRASS, 1/8" NPT	A00055	A00055	1	5
75	BUSHING, REDUCER, BRASS, 3/8" NPT (50PSI)	A00168-1	A00168-1	1	5
	BUSHING, REDUCER, BRASS, 1/4" NPG (100PSI)	A00168-18	A00168-18	1	5
76	90 ELBOW, BRASS, 3/8" MP x 1/4" C TUBE FITTING (50PSI)	A00133	A00133	1	5
	90 ELBOW, BRASS, 1/4" MP x 1/4" C TUBE FITTING (100PSI)	A00140	A00140	2	5
77	TUBE FITTING, BRASS, 1/4" FP x 1/4" C TUBE FITTING	A00145	A00145	1	5
78	NUT, HEX, BRASS, 1/4" PIPE	A00124	A00124	2	5
79	NUT, PIPE, PLASTIC	B02214	B02214	2	5
80	SHAFT ASSY, HANDLE	80418-6A	80418-6A	1	5
81	TUBING, COPPER, 1/4" OD, LEFT TIPS	A00085-5	A00085-13	1	2 & 3
82	TUBING, COPPER, 1/4" OD, RIGHT TIPS	A00085-4	A00085-14	1	2 & 3
83	TUBING, COPPER, 1/4" OD x 25 7/8" LG	A00085-7	A00085-16	1	4
84	TUBING, COPPER, 1/4" OD x 16 9/16" LG	A00085-6	A00085-6	1	4
85	SPACER, NYLON, 3/16" THK x 1/2" ID x 1" OD	C00240	C00240	5	4

# PARTS LIST

## POLARIS AND SUPERNOVA 800 & 1200 MODELS

Item	Description	Part No.		qty	fig
		Polaris	Supernova		
86	GASKET, VACUUM MOTOR, NEOPRENE	E02448	E02448	2	4
87	BRACKET, BRUSH MOTOR	D02370	D03365	1	2 & 3
88	PUMP MOTOR, INTERNAL BYPASS 115VAC, W/ MOLEX CONNECTOR (50PSI)	00512A	00512A	1	5
	PUMP MOTOR, INTERNAL BYPASS 240FAC, W/ MOLEX CONNECTOR (50PSI)	025141A	025141A	1	5
88	PUMP MOTOR, INTERNAL BYPASS 115VAC, W/ MOLEX CONNECTOR (100PSI)	02513F-100A	02513F-110A	1	5
	PUMP MOTOR, INTERNAL BYPASS 1240VAC, W/ MOLEX CONNECTOR (100PSI)	02514F-100A	02514F-110A	1	5
89	FRAME ASSEMBLY, LOWER	02341A	03370A	1	5
90	BARB, 3/8" x 1/4" FP, BRASS	A00061	A00061	1	5
91	90 ELBOW, BRASS, 1/4" F x 1/4" M	A00052	A00052	2	5
92	FILTER STRAINER, IN-LIE	K00709	K00709	1	5
93	QUICK DISCONNECT, BRASS, 1/4" F x 1/4" FP	A00102	A00102	1	5
94	SWITCH GUARD ASSEMBLY	82414A	82414A	1	6
95	COVER, ROCKER SWITCH	B00214-2	B00214-2	3	6
96	SWITCH, LIGHTED ON-OFF ROCKER	B02211-1	B02211-1	3	6
97	LIGHT, INDICATOR	B021916	B02196	1	6
98	GRIP, HANDLE BLK, VINYL	K00715B-1	K00715B-1	2	6
99	BOOT, FLEX, CIRCUIT BREAKER (115V - 1 REQ, 250V - 2 REQ)	B02193	B02193		6
100	SPRING BRACKET, VACUUM VALVE, ASSEMBLY		83349A	1	4
101	SPRING, VACUUM VALVE SLIDE RETURN KIT		010666A	1	4
102	HANDLE, ADJUSTABLE, STEEL	D02403	D02338-2	1	6
103	SHAFT, VACUUM VALVE		D03356	1	4
104	CIRCUIT BREAKER, 3 AMP (115VAC)	B02192		1	6
	CIRCUIT BREAKER, 4 AMP (115VAC)		B02192-1	1	6
	CIRCUIT BREAKER, 1.5 AMP (250FAC)	B02191	B02191	1	6
105	OUTLET ASSEMBLY, ACCESSORY, (115VAC OPTIONAL)	80188A	80188A	1	6
	OUTLET ASSEMBLY, ACCESSORY, (250VAC OPTIONAL)	80198A	80198A	1	6
106	CORD WRAP, ASSEMBLY	82408A	82408A	1	6
107	CORD ASSY, ACC HANDLE TO LOWER FRAME (115VAC)	00185-32A	00185-32A	1	6
	CORD ASSY, ACC HANDLE TO LOWER FRAME (250FAC)	00185-33A	00185-33A	1	6
108	GASKET, HANDLE	E03432	E03432	1	6
109	COVER PLATE ASSEMBLY	82409A	82409A	1	6
110	LOCK NUT, HEX, BRASS, 3/8"-18 NPT (115VAC)	B00201	B00201	1	6

# PARTS LIST

## POLARIS AND SUPERNOVA 800 & 1200 MODELS

Item	Description	Part No.		qty	fig
		Polaris	Supernova		
	LOCK NUT (250VAC)	B02214	B02214	1	6
111	CORD, POWER (115VAC)	B00221-2	B00221-2	1	6
	CORD, POWER (250VAC)	B00225	B00225	1	6
112	SWITCH, 10 AMP, 250FAC		B02173	1 (2)	6
113	STRAIN RELIEF, POWER CORD (115VAC)	B02213	B02213	1	6
	STRAIN RELIEF, POWER CORD (250VAC)	B02215	B02215	1	6
114	BUMPER, VACUUM VALVE		E03435	2	4
115	SPRINGS AND BALLS KIT		83372A	1	4
116	MANDREL, BLIND RIVET, 1/8" DIA x 1/4" DIA x 390"		C00300-46	10	1
117	WASHER, STEEL, BLIND RIVET, 1/8" DIA x 3/8" DIA x 1/16"		C00304	10	1
118	COVER		F02498	1	1
119	RFI FILTER ASSEMBLY, 2 AMP, 250VAC		B02175	1	5
120	HARNESS, RECTIFIER (115VAC)	00185-29A	00185-41A	1	2 & 3
	HARNESS, RECTIFIER (250VAC)	00185-37A	00185-31A	1	2 & 3
121	RECTIFIER, FISH PAPER ASSEMBLY	82171A	82202A	1	2 & 3
122	CLAMP, 2-1/8" x 2-3/8", NYLON		J00657	2	3
123	HOSE, AIR VALVE ASSEMBLY, 2"		J00621	1	3
124	SLIDE, VACUUM VALVE, ASSEMBLY		D03364	1	4
125	FRONT BRACKET, PULL CABLE ASSEMBLY		83348A	1	3
126	SWITCH, BRACKET ASSEMBLY		82172A	1	3
127	SWITCH, MOTOR REVERSE		B02172	3	3
128	TUBING, TIP CONNECTOR		A00085-15	2	3
129	TEE, FEMALE BRANCH		A00156	2	3
130	FLOATING HEAD RETAINING PIN, ASSEMBLY		83374A	1	3
131	GLIDE, SIDE		80465A	2	3
132	ADAPTER, FRONT HEAD		83361A	1	3
133	HOSE, FRONT HEAD, ASSEMBLY, 1-1/2"		J00618-1	1	3
134	CLAMP, 1-1/4" x 1-7/16", NYLON		J00656	2	3
135	LABEL KIT, ENGLISH (SUPERNOVA)			1	1 & 6
	LABEL KIT, GERMAN (SUPERNOVA)			1	1 & 6
136	FLOATING HEAD, FRONT		83366A	1	3
137	FLOATING HEAD, REAR, ASSEMBLY		83367A	1	3
138	BUTTON, GLIDE		F00464	8	3
139	SEAL, SLIDE BLOCK		E03434	1	4
140	WIRE CONNECTOR, ASSY, HANDLE, JUMPER (115VAC)		00185-37A	1	6
	WIRE CONNECTOR, ASSY, HANDLE, JUMPER (250VAC)		00185-38A	1	6

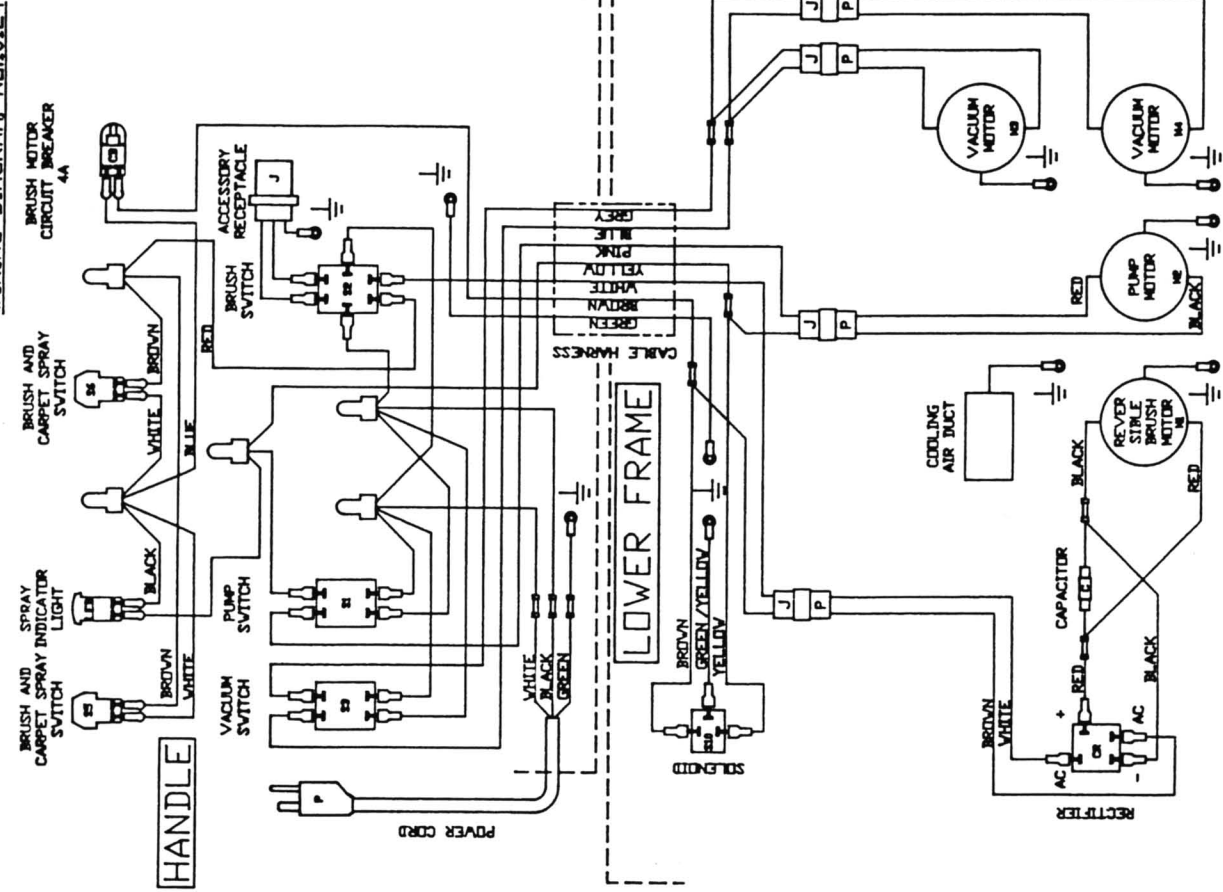
# PARTS LIST

## POLARIS AND SUPERNOVA 800 & 1200 MODELS

Item	Description	Part No.		qty	fig
		Polaris	Supernova		
141	FILTER, RFI, 16 AMP, ASSEMBLY (250VAC)		B02174	1	6
142	SHIELD PLATE, RFI, ASSEMBLY		D03371	1	6
143	HARNESS, RFI FILTER TO SWITCHES (250VAC)		00185-35A	1	6
	HARNESS, POWER CORD TO SWITCHES (250VAC)		00185-30A	1	6
144	INSULATOR, TERMINAL BLOCK (250VAC)		B02195	1	6
145	TERMINAL BLOCK (250VAC)		B02190	1	6
146	WIRE CONNECTORS, TERM BLOCK TO GRND POST, ASSY (250VAC)		00185-39A	1	6
147	HARNESS, TERM BLOCK TO RFI FILTER (250VAC)		00185-36A	1	6
148	STOP BRACKET		D03350	1	6
149	CAM WITH PLUNGER, PULL CABLE		83346A	1	6
150	GASKET, VACUUM VALVE GUIDE		80459A	1	4
151	CAP, PROTECTIVE		K02716	1	6
152	COLLAR, SHAFT, 3/8" ID		C02277	1	6
153	WASHER, TEFLON, 3/8" ID		C02287	2	6
154	BUSHING, NYLINER, 3/8" ID		K00678	2	6
155	LEVER ARM		D03347	1	6
156	ADAPTER PLATE, VALVE GUIDE		D03363	1	4
157	CLIP, PULL CABLE, ASSEMBLY		83357A	1	6
158	GUIDE, VACUUM VALVE, ASSEMBLY		D03345	1	4
159	KNOB, BALL, 1 3/8"		K02712	1	6
160	GROMMET		E00449	2	6
161	CABLE		D03369	1	3 & 6
162	HARNESS, SWITCHES		00185-42A	1	3
163	RECTIFIER	M00843	B02229	1	2 & 3

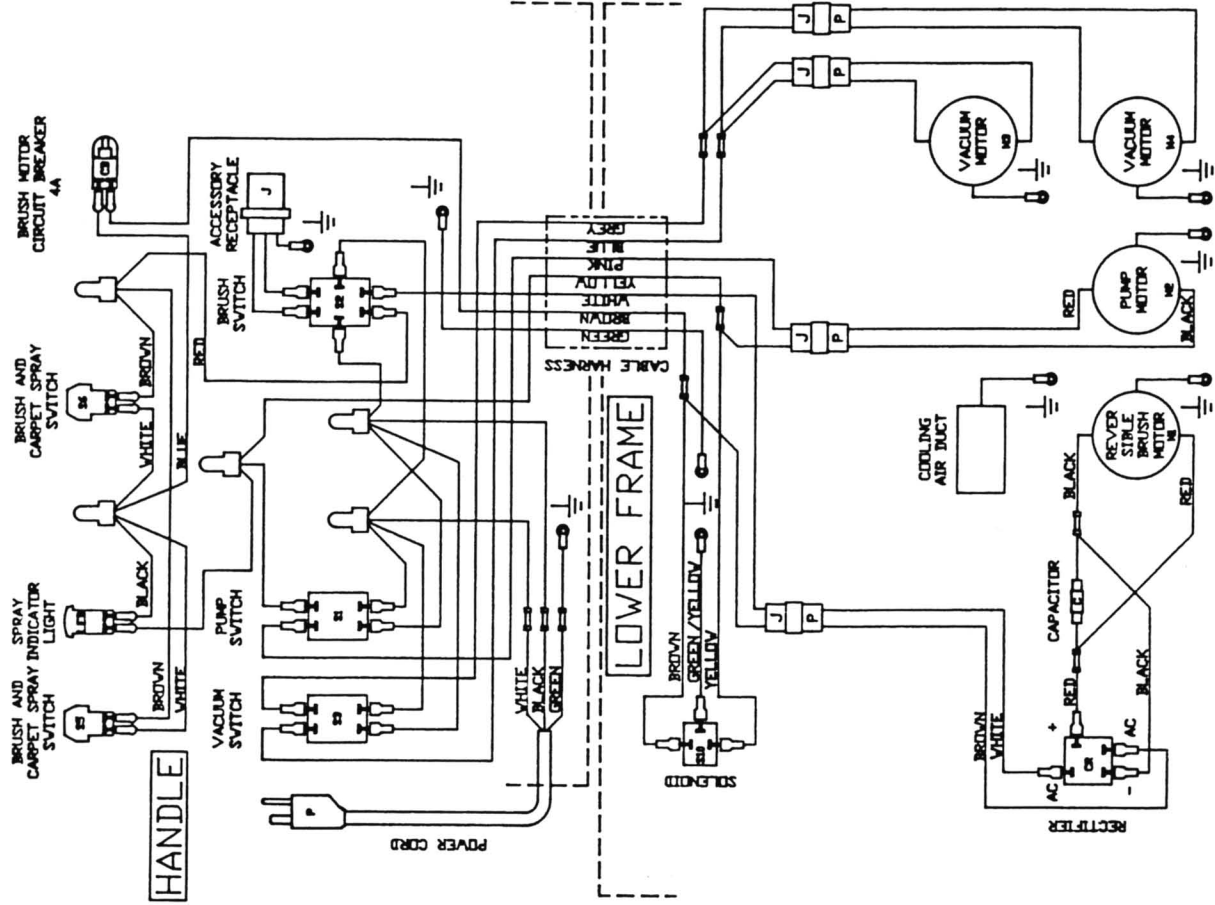
**SUPERNOVA  
MODEL 800 AND 1200**

115 V AC, 60 HZ  
WIRING DIAGRAM, NO.10122

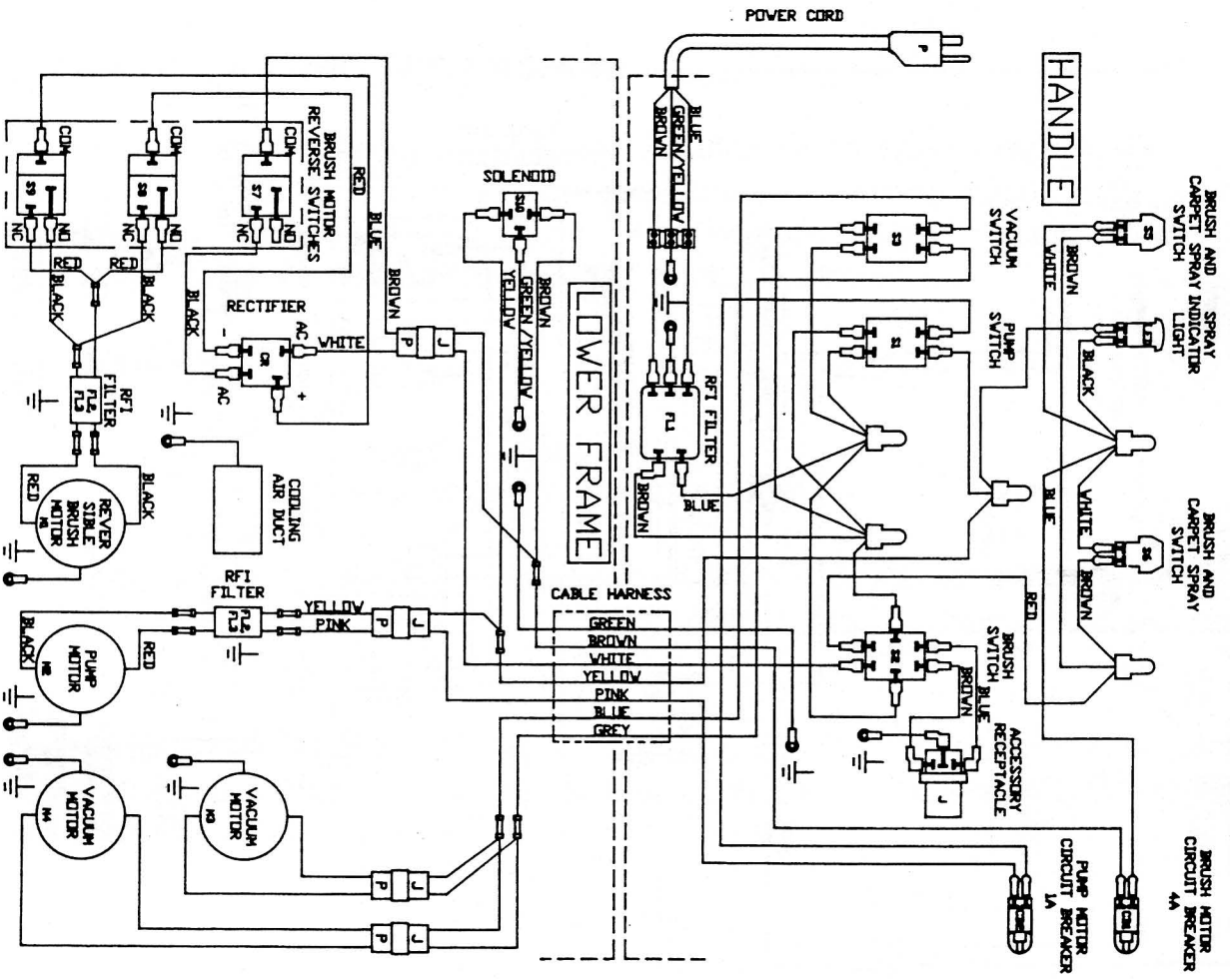


**POLARIS MODEL 800 AND 1200**

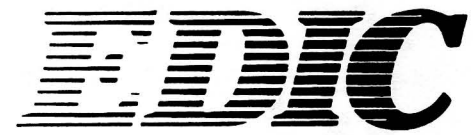
115 V AC, 60 HZ  
WIRING DIAGRAM, NO.10124







**NOTES**



1753 Blake Avenue  
Los Angeles, CA 90031-1006  
(323) 660-1635  
(800) 338-EDIC  
FAX (323) 667-0144