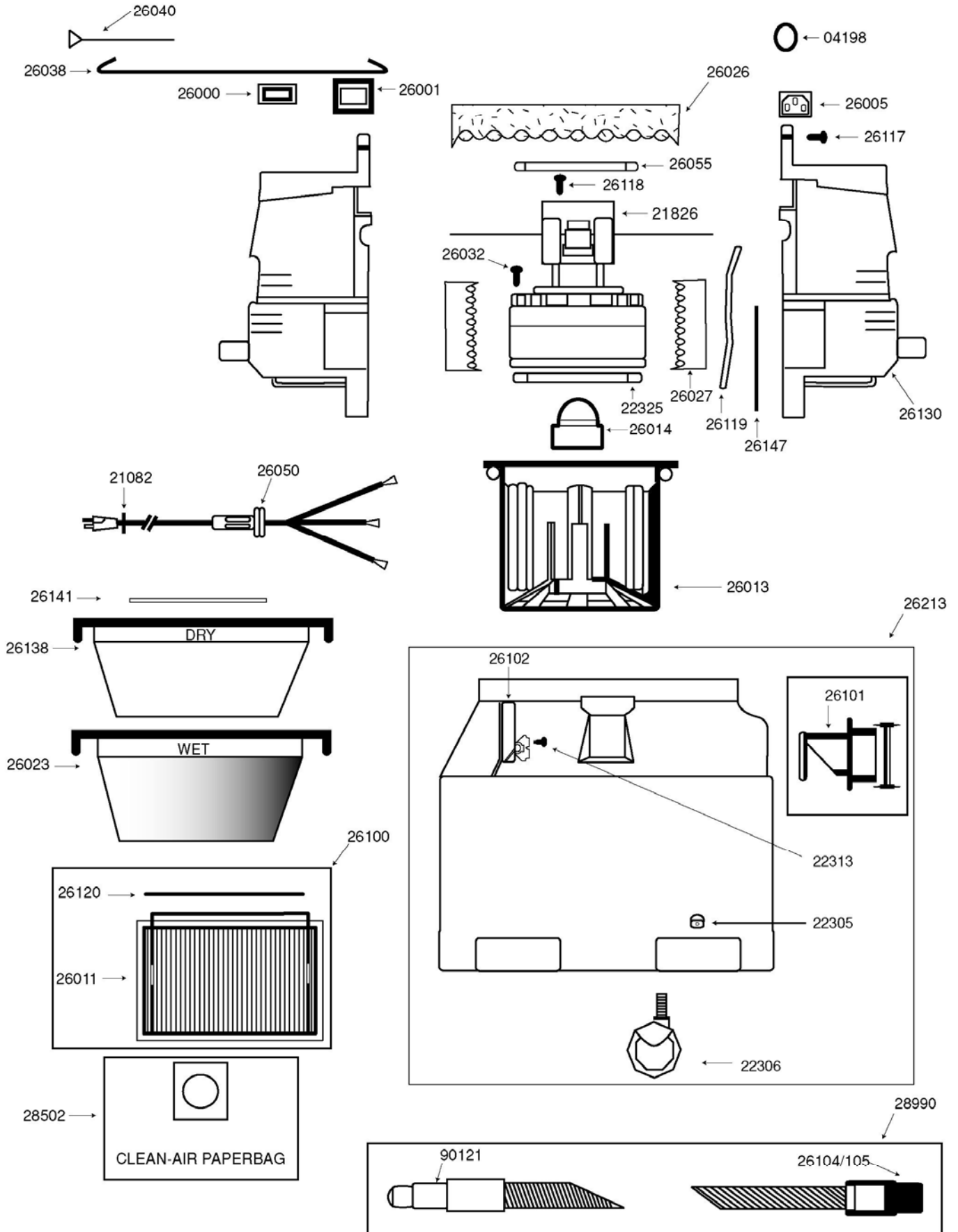


M60 PROCARE

November 2001





M60 Procure

Item	Description	Qty Req.
04198	Dome Plug	1
21082	Cord Grip	1
21826	Motor Small Bi-pass	1
22305	Acorn Nut	5
22306	Caster Swivel Stem	5
22313	Screw #10 x 3/8 Long	4
22325	Universal Motor Gasket	1
26000	Rocker Switch	1
26001	Switch Plate	1
26005	Power Outlet Plug	1
26013	Filter Cage Large	1
26014	Float Shut Off	1
26023	Wet Filter Assembly	1
26026	Acoustic Foam	1
26027	Lower Acoustic Foam	8
26032	#10-16X1 PHS	2
26038	Black Wire Assembly	1
26040	Ground Wire Assembly	1
04198	Dome Plug	1
26011	Filter Hepa Large (OPTIONAL)	1
26050	Cord Assembly	1
26055	Upper Motor Gasket	1
26100	Fliter, Clamp Assembly (OPTIONAL)	1
26101	Inlet Deflector	1
26102	Tank Clamp	2
26104/105	Hose Coupling	1
26117	Screw #8 X 3/4 Long	12
26118	Ground Screw #10 x 3/8 Long	2
26119	Vacuum Gauge Hose	
26120	Clamp Hepa Filter (OPTIONAL)	1
26130	Motor Housing Maroon	2
26138	Dry Filter Norcim Lg. w/ Gasket	1
26141	Jogger Ring	1
26147	Housing Gasket	2
26150	Decal 'Michael's' Small	1
26151	Decal 'Michael's' Large	1
26154	Decal ' Procare' M60	1
26213	Tank Complete	1
28990	Hose - Vaculok Assembly	1
28502	Large Paper Bag - 10/pkg. (OPTIONAL)	1
90121	1-1/2 Hose Cuff	1



P.O. Box 72 - 105 Scott Ave
Paris, ON N3L 3E5
Toll Free: 800-263-3731 Fax: 800-489-7280

November 2001